

# FORM B – BUILDING

MASSACHUSETTS HISTORICAL COMMISSION  
MASSACHUSETTS ARCHIVES BUILDING  
220 MORRISSEY BOULEVARD  
BOSTON, MASSACHUSETTS 02125

Assessor's Number USGS Quad Area(s) Form Number

31B-100 Easthampton NTH.618

**Town:** Northampton

**Place:** (*neighborhood or village*)

## Photograph



**Address:** 12 Barrett Place

**Historic Name:** Suzan Benedict House

**Uses:** Present: single-family residence

Original: single-family residence

**Date of Construction:** 1922-1930

**Source:** Directories

**Style/Form:** Colonial Revival

**Architect/Builder:**

**Exterior Material:**

Foundation: brick

Wall/Trim: clapboards

Roof: asphalt shingles

**Outbuildings/Secondary Structures:**

Garage

**Major Alterations** (*with dates*):

Side porch added, ca. 1980

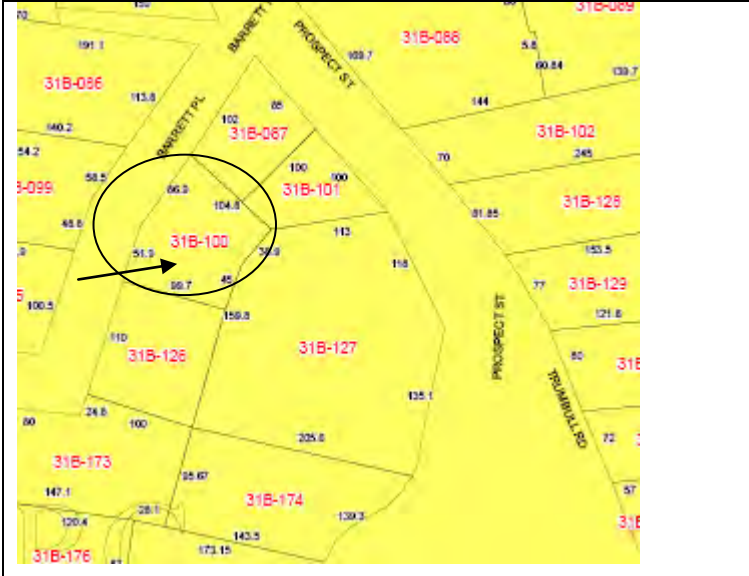
**Condition:** good

**Moved:** no | x | yes | | **Date** \_\_\_\_\_

**Acreage:** 0.294 acres (Northampton Assessors)

**Setting:** House faces north on a tree-shaded residential, dead-end street.

## Topographic or Assessor's Map



**Recorded by:** Bonnie Parsons

**Organization:** PVPC

**Date** (*month / year*): March, 2010

# INVENTORY FORM B CONTINUATION SHEET

[NORTHAMPTON]

[12 BARRETT PLACE]

MASSACHUSETTS HISTORICAL COMMISSION

220 MORRISSEY BOULEVARD, BOSTON, MASSACHUSETTS 02125

Area(s) Form No.

NTH.618

Recommended for listing in the National Register of Historic Places.

*If checked, you must attach a completed National Register Criteria Statement form.*

*Use as much space as necessary to complete the following entries, allowing text to flow onto additional continuation sheets.*

## ARCHITECTURAL DESCRIPTION:

*Describe architectural features. Evaluate the characteristics of this building in terms of other buildings within the community.*

The 20<sup>th</sup> century Colonial Revival style includes houses in a range of approaches to its Colonial forebearers from archaeological to free interpretations. The Suzan Benedict house comes closer to the archaeological form of the style as a version of the First Period houses of the 17<sup>th</sup> century. It is two-and-a-half stories in height under a side-gable roof. The rear roof extends to first floor ceiling level to provide a saltbox profile and the north façade has a jetty with pendants found in First Period houses. Further, the clapboard-sided house has a center chimney. It is three bays wide and a modern three bays deep and sash is a rather unusual 8/8. The center door has a simple molded surround and sidelights. There is a side porch entry on the east elevation and a garage in the rear yard.

## HISTORICAL NARRATIVE

*Discuss the history of the building. Explain its associations with local (or state) history. Include uses of the building, and the role(s) the owners/occupants played within the community.*

From the 1980 Form B, "Barrett Place was laid out in 1910 through a portion of the Hinckley estate, known as "the Manse". This short, dead-end street has eight houses, most of which are in the Colonial Revival style and were built in the 1920s. This house was built during the 1920s with the first known owner being Suzan Benedict, a professor Mathematics at Smith College."

## BIBLIOGRAPHY and/or REFERENCES

Beers, F. W. County Atlas of Hampshire Massachusetts, New York, 1873.

Hales, John G. Plan of the Town or Northampton in the County of Hampshire, 1831.

Miller, D. L. Atlas of the City of Northampton and Town of Easthampton, Hampshire County, Massachusetts, Philadelphia, 1895.

Walker, George H. and Company. Atlas of Northampton City, Massachusetts, Boston, 1884.

Walling, Henry F. Map of Hampshire County, Massachusetts, New York, 1860.

**INVENTORY FORM B CONTINUATION SHEET**

[NORTHAMPTON]

[12 BARRETT PLACE]

MASSACHUSETTS HISTORICAL COMMISSION  
220 MORRISSEY BOULEVARD, BOSTON, MASSACHUSETTS 02125

Area(s) Form No.

	NTH.618
--	---------

**National Register of Historic Places Criteria Statement Form**

Check all that apply:

- Individually eligible     Eligible only in an historic district
- Contributing to a potential historic district     Potential historic district

Criteria:       A     B     C     D

Criteria Considerations:     A     B     C     D     E     F     G

Statement of Significance by Bonnie Parsons

*The criteria that are checked in the above sections must be justified here.*

The Suzan benedict House would contribute to a potential historic district that extends north of Northampton’s primary corridor, Elm Street, encircling and encompassing the primary feature of that landscape, Round Hill. The potential historic district is significant for its 19<sup>th</sup> century development from a few gentlemen’s farms to a neighborhood dense with the homes of its most prominent residents and educational institutions that shaped the character of Northampton for several hundred years to the present. Suzan Benedict is a representative of this history as a professor at Smith College.

Architecturally the potential historic district is significant for the mix of late 19<sup>th</sup> century and early 20<sup>th</sup> century styles from the late Gothic Revival, Italianate, and Queen Anne styles to the early 20<sup>th</sup> century Colonial Revival and Tudor Revival style houses that were often architect-designed by the region’s most well-known designers. This potential historic district has integrity of workmanship, feeling, setting, design and materials.